

Anti-H_Siglec15 mIgG2a Antibody(5G12)

Product information

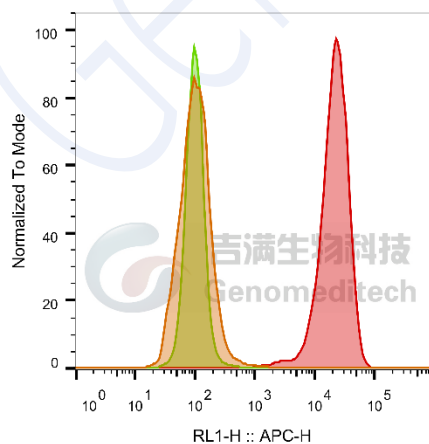
GM-24717AB-10	10 µg
GM-24717AB-100	100 µg
GM-24717AB-1000	1 mg

Antibody Information

Species Reactivity	Human; Cynomolgus; Mouse
Clone	5G12
Source/Isotype	Monoclonal mouse IgG2a, κ
Application	Flow cytometry;
Other Names	CD33L3, HsT1361, SIGLEC-15
Gene ID	Q6ZMC9-1 (human); Q8SPW1-1(Cynomolgus)
Storage	Store at 2-8°C short term (1-2 weeks).Store at ≤ -20°C long term. Avoid repeated freeze-thaw.
Formulation	Phosphate-buffered solution, pH 7.2.
Endotoxin	< 1 EU/mg, determined by LAL gel clotting assay

Data Examples

Flow cytometry H_SIGLEC15 HEK-293 Cell Line (Catalog # GM-C13116) was stained with Anti-H_Siglec15 mIgG2a Antibody(5G12) or isotype control antibody.



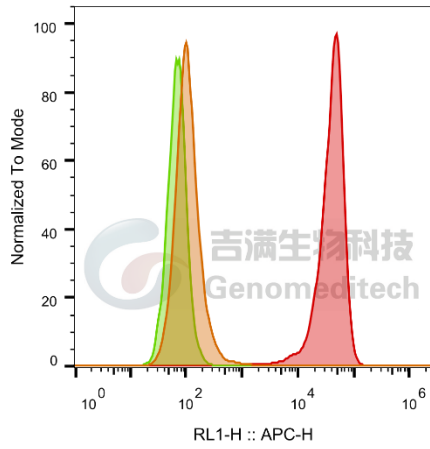
SampleID	Geometric Mean : RL1-H
HEK-293 anti-H_SIGLEC15+APC-2nd Ab	103
HEK-293 H_SIGLEC15 M_IgG+APC-2nd Ab	101
HEK-293 H_SIGLEC15 anti-H_SIGLEC15+APC-2nd Ab	20131

Fig. FACS

Version:0.3.2.240521

Flow cytometry

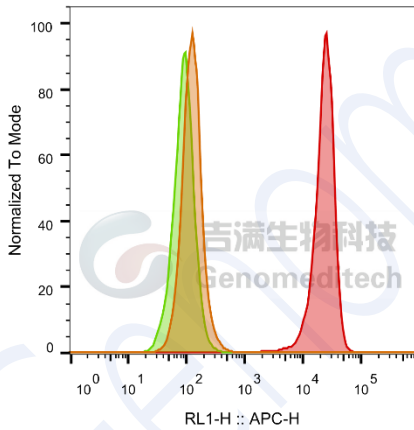
Mouse_SIGLEC15 CHO-K1 Cell Line (Catalog # GM-C23926) was stained with Anti-H_Siglec15 mlgG2a Antibody(5G12) or isotype control antibody.



SampleID	Geometric Mean : RL1-H
CHO-K1 anti-SIGLEC15+APC-2nd Ab	111
CHO-K1 M_SIGLEC15 M_IgG+APC-2nd Ab	69.3
CHO-K1 M_SIGLEC15 anti-SIGLEC15+APC-2nd Ab	37443

Flow cytometry

Cynomolgus_SIGLEC15 CHO-K1 Cell Line (Catalog # GM-C23927) was stained with Anti-H_Siglec15 mlgG2a Antibody(5G12) or isotype control antibody.



SampleID	Geometric Mean : RL1-H
CHO-K1 anti-H_SIGLEC15+APC-2nd Ab	125
CHO-K1 Cyno_SIGLEC15 M_IgG+APC-2nd Ab	89.5
CHO-K1 Cyno_SIGLEC15 anti-H_SIGLEC15+APC-2nd Ab	21945

Fig. FACS